

CAPITAL SAFETY TRAINING AND CONSULTING SERVICES



Capital Safety is a
Registered Training Organisation
(Provider no. 91276)

capital
SAFETY

GLOBAL LEADER IN FALL PROTECTION

TRAINING

DEDICATED TO BRINGING EVERY WORKER AT HEIGHT HOME SAFELY

When it comes to protecting your work site - no matter where it is - we offer a variety of training and consulting services to fit your needs. At our site or yours, you can trust us to provide world-class training with the industry's best instructors. Because if it's not exactly what you need, then it's not comprehensive training.

- Capital Safety is a Registered Training Organisation (RTO) and complies with the Vocational Education and Training (VET) Quality Framework. You should also have confidence that all our Nationally Recognised courses have been approved by the Australian Skills Quality Authority (ASQA) ensuring that quality standards are met.
- A full-time team dedicated exclusively to fall protection, confined space and vertical rescue training—more than any other in the industry.
- Training personnel with extensive industry backgrounds that include rescue, fire and safety capabilities.

ANYTIME ANYWHERE – OUR SITE OR YOURS

The key to effective training is practical, hands-on experience. We offer a full range of fall protection, confined space, industrial rescue, first aid and a range of specialty courses on-site or at one of our two state-of-the-art training centres located throughout Australia.

TRAINING



- **Open Enrolment Courses**

This course has been designed to enable participants to work at heights competently as well as being able to participate in the decision making process. Participants will be taught to assess site risk, develop a fall protection and rescue plan and in the event of an emergency coordinate and/or participate in a work place rescue. This course offers all 5 levels of Height Safety training as prescribed in AS/NZS1981.4:2009 including Height Safety Supervisor and Height Safety Manager Qualifications.

- **In-house Training Facilities**

Custom-built, in-house training facilities at both our Sydney and Darwin training centres provide a hands-on training experience. Practical demonstrations, individual exercises and theoretical assessment ensure our courses build confidence and enhance safety competence when working at heights.

- **On-Site Training**

Capital Safety offers its training programs at the client's site to all locations across Australia. If you can provide the students and the location, we will provide the equipment and experienced instructors.

- **Tailored Training**

Capital Safety also tailor training courses to suit a company's individual requirements. We specialise in the design and implementation of training for industry sectors such as: civil, construction, mining, and wind energy. We also offer specialist courses such as: roof top and bridge rescue, jump form, tower crane and swing stage rescue, drill rig rescue, post fall recovery and wind turbine rescue.

- **Online Learning**

Capital Safety has developed online versions of the Height Safety Theory and Height Safety Equipment Inspection training, contact us to find out more, or to sample a free limited demonstration of the training.



AWARENESS

- **24/7 Access to Fall Protection Resources**

Capital Safety provides a wide variety of resources to help educate and inform our customers in the area of fall protection, all available online. This includes our online learning fall protection awareness and competent person inspector modules as well as a wide variety of videos, technical bulletins and links to industry resources. Go to Training and Safety Resources at www.capitalsafety.com.au for additional details.

- **Expert Consulting**

Providing early detection of fall protection hazards, solutions to minimise risks and implement training and inspection.

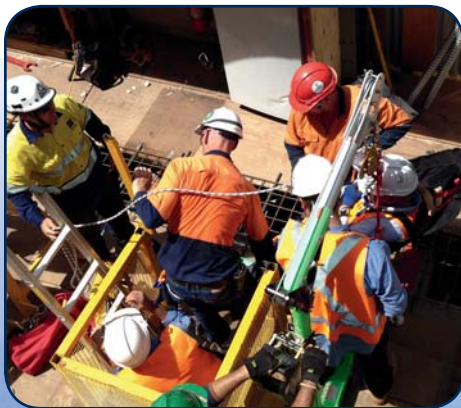


WORLD-CLASS DEMONSTRATION VEHICLES

Our fleet of 11 mobile demonstration vehicles located throughout Australia and New Zealand are fitted out with the latest fall protection and rescue systems that can bring vital on-site tool box talks to your workplace. These demonstration vehicles are fitted with drop test and force measuring instruments to demonstrate arresting forces workers would experience during a fall.



INDUSTRY-LEADING CONSULTING SERVICES



Working on site with you, our team will provide industry-leading consulting services for:

- Site audits
- Policy and procedures
- Hazards analysis
- Equipment inspections
- Fall protection plans
- Rescue plans
- Emergency evacuation procedures

Call today to learn more about our training and consulting services

1800 245 002
or www.capitalsafety.com.au



TRAINING CLASSES

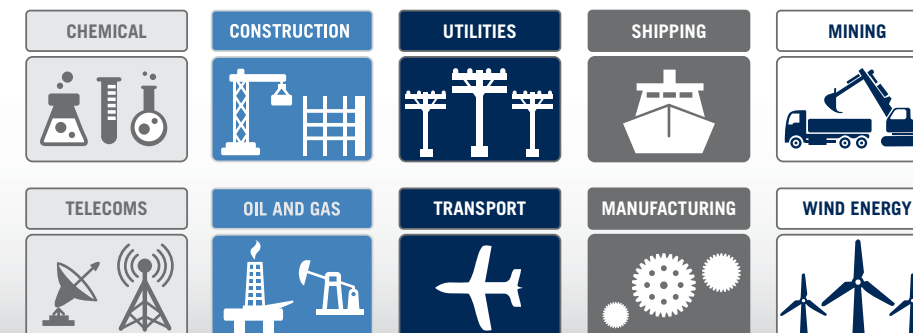
Our trainer's experience and knowledge is a result of working in the safety industry for a variety of clients across Australia. Our courses have been designed to ensure your employees are thoroughly trained in a practical, hands-on environment.

Detailed course descriptions and scheduled public dates and booking forms are available online.

Capital Safety is a Registered Training Organisation (Provider no. 91276)



WHERE OUR EXPERTISE EXTENDS:

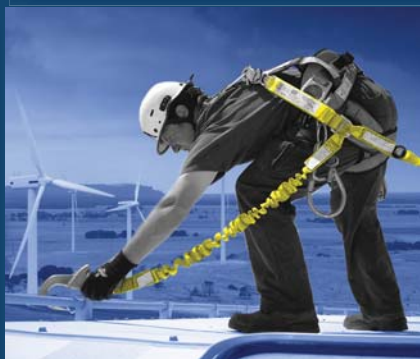


Course	Description	Qualification	Length	Trainer Ratio
Fall Protection Courses as Recommended in AS/NZS1891.4:2009				
Height Safety Theory	Participants will be introduced to height safety issues such as the consequences and impact of falling from height. Hierarchy of control, product selection and rescue are also discussed.	Certificate of Completion for Height Safety Theory	4 Hours	1:15
Height Safety Operator (Work Safely at Heights)	This course takes the participant through the theory of working at heights and also includes practical exercises using height safety equipment to give participants the knowledge to replicate these skills at the workplace. This course includes an introduction to peer rescue.	RIIWS204D Work Safety at Height	1 Day	1:10
Height Safety Supervisor	This course is designed to provide candidates with the necessary skills to be competent as a Height Safety Supervisor as per AS/NZS1891.4. Height Safety supervisors need to be able to: - Perform harness based skills unsupervised - Competently supervise height safety operators - Participate in a first response rescue	Statement of Attainment in RIIWS204D Work Safely at Heights, PUASAR022A Participate in a Rescue Operation, RIIRIS201D Conduct Local Risk Control, PUATEA001B Work in a Team, PUATEA002B Work Autonomously for "Height Safety Supervisor"	3 Days	1:6
Height Safety Manager	This course builds on the previous unit skill level of Height Safety Supervisor to consolidate all that is learned and to further develop these skills to Height Safety Manager level as per AS/NZS1891.4. Candidates will be given height safety tasks and will be required to choose the most appropriate equipment for that task, write a fall protection plan and a rescue plan as well as conducting a risk assessment (SWMS). Candidates will work in teams to select, inspect, install and use the chosen height safety systems.	Statement of Attainment in MEM15004B Perform Inspection, RIIRIS301D Apply Risk Management Processes for "Height Safety Manager"	2 Days	1:6
Height Safety Equipment Inspector	This unit provides candidates with the knowledge and techniques to inspect and oversee the care and maintenance of their organisations fall protection equipment. The training focuses on the Australian Standards that require scheduled and documented inspection of height safety equipment.	MEM15004B Perform Inspection	4 Hours	1:8
Rescue from Heights Courses* – All Nationally Accredited Rescue courses have the following pre-requisites: PUAEME001B Provide Emergency Care OR HTLAID002 Provide Basic Emergency Life Support AND RIIWS204D Work Safely at Heights				
Post Fall Recovery	This course has been designed to give candidates the necessary skills to perform an emergency recovery of a casualty with a pre-engineered rope rescue kit using a variety of recovery techniques such as high/low angle rescue, rescue from ladders/structures, rescue from an SRL and casualty evacuation techniques.	Statement of Attainment in PUASAR022A Participate in a Rescue Operation, for "Post Fall Recovery"	1 Day	1:6
Tower Rescue Basic Operator	This course is designed to provide candidates with the necessary skills and knowledge to perform vertical rope rescue techniques off towers, masts and structures using a Pre-engineered rescue kit.	Statement of Attainment in PUASAR022A Participate in a Rescue Operation, for "Tower Rescue Basic Operator"	1 Day	1:6
Tower Rescue Advanced Operator	This course is designed to provide candidates with the necessary skills and knowledge to perform vertical rope rescue techniques off towers, masts and structures using technical rope rescue equipment.	Statement of Attainment in PUASAR022A Participate in a Rescue Operation, for "Tower Rescue Advanced Operator"	2 Days	1:6
Drill Rig Rescue	This course is designed to provide candidates with the necessary skills and knowledge to perform rope rescue techniques off Drill rigs using pre-engineered rescue kits to gain access to and recover a suspended or injured casualty.	Statement of Attainment in PUASAR022A Participate in a Rescue Operation, for "Drill Rig Rescue"	1 Day	1:6
Bridge & Rooftop Rescue	This course is designed to give candidates the necessary skills to perform a recovery of a casualty from either a bridge, rooftop or other structures where overhead anchorages are not available in the event of an emergency.	Statement of Attainment in PUASAR022A Participate in a Rescue Operation for "Bridge or Rooftop Rescue"	1 Day	1:6
Jump Form Rescue	This course has been designed to give candidates the skills to perform a recovery of a casualty from within a Jump Form on a construction site.	Statement of Attainment in PUASAR022A Participate in a Rescue Operation for "Jump Form Rescue"	1 Day	1:6
Tower Crane Rescue & Evacuation	This course is designed to give candidates the necessary skills to respond to a variety of emergency situations that may occur whilst working on Tower Cranes such as a post fall recovery of a suspended casualty, the safe evacuation of an injured person off the deck or towers and the emergency self evacuation of a crane operator.	Statement of Attainment in PUASAR022A Participate in a Rescue Operation for "Tower Crane Rescue"	1 Day	1:6
Swing Stage Rescue	This course is designed to give candidates the necessary skills to perform the setup of independent lifelines in order to work safely in swing stages. Our swing stage emergency training also teaches candidates how to perform emergency recovery operations of suspended or incapacitated workers in the event of a swing stage collapse or disablement. Candidates will also gain the necessary skills to be able to perform an emergency evacuation out of a swing stage.	Statement of Attainment in PUASAR022A Participate in a Rescue Operation for "Swing Stage Rescue"	1 Day	1:6
Underground Mining Escape Way Rescue	This course is designed to provide rescue personal and teams with the necessary skills to perform site specific escape way rescue using techniques such as: - The set-up of high directional anchors - Hauling operations, mechanical winches and rope mechanical advantage - Escape way stretcher rigging and attendant positioning techniques	Statement of Attainment in PUASAR022A Participate in a Rescue Operation for "Escape Way Rescue"	1 Day	1:6
EWP & Work Platform Emergency Escape	This course will equip those attending with the necessary skills to safely evacuate off EWP's, Tower Cranes or any other work platforms where an emergency evacuation may be required.	Certificate of Completion for EWP Emergency Escape	4 Hours	1:10

*If a participant wishes to undertake further rescue training after completion of PUASAR022A Participate in a Rescue Operation unit of competency, a certificate of completion will be issued.

Course	Description	Qualification	Length	Trainer Ratio
Specialised Courses				
Advanced Tower Access Climber	This intensive course has been specially designed to provide candidates with advanced climbing skills that give workers the ability to access all areas of towers using working at heights and rope access work positioning techniques. Candidates will also learn technical rope rescue techniques in order to deal with different emergencies that may arise due to the variety of situations that tower workers may face in everyday high risk working environments.	Statement of Attainment in: RIIWHS204D Work Safely at Heights, PUSASR022A Participate in a Rescue Operation, PUATEA001B Work in a Team, PUATEA002B Work Autonomously, RIIRIS201D Conduct Local Risk Control, RIIRIS301D Apply Risk Management Processes For "Advanced Tower Access Climber"	5 Days	1:6
Vertical Rescue	This course is intended for persons working in specialist rescue teams and delivers the core fundamentals of rope rescue skills. Topics such as stretcher basics, knots, mechanical advantage, basic rope skills and snatch rescues will be taught to the candidates.	Statement of Attainment in "PUASAR032A Undertake Vertical Rescue"	5 Days	1:6
Low Voltage Rescue	This course aims to increase the learners' skills in low voltage rescue and to outline the responsibilities of personnel and control measures that can be taken to ensure safety, along with industry best practice.	Statement of Attainment in "UETDRRF068 Perform Rescue From a Live LV Panel & HLTAI001 Provide Cardiopulmonary Resuscitation"	4 Hours	1:10
Wind Turbine Height Safety & Rescue	This program is customised to wind turbine technicians. Practical exercises include rescue of an incapacitated worker out of a tower, yaw deck or hub. Candidates also learn how to set and perform an emergency evacuation out of a Nacelle.	Statement of Attainment in: "RIIWHS204D Work Safely at Heights, PUATEA001B Work in a Team, PUATEA002B Work Autonomously, RIIRIS201D Conduct Local Risk Control, PUASAR022A Participate in a Rescue Operation" for "Wind Turbine Rescue & Evacuation"	3 Days	2:8
Hub Rescue	Using the skills taught in the Wind Turbine Height Safety & Rescue, Hub Rescue teaches candidates how to package and remove a casualty from a wind turbine hub and lower them to safety.	Certificate of Completion for "Hub Rescue"	4 Hours	2:8
Wind Turbine Roof Rescue	After completing the Wind Turbine Height Safety & Rescue course, candidates can then move on to learn how to safely access an incapacitated or suspended casualty off a wind turbine roof.	Certificate of Completion for "Wind Turbine Roof Top Rescue"	4 Hours	2:6
Transformer Access/Substation	Height safety for transformer access and within substations is a course built for client need and necessity. Based upon our work safely at heights course and customised to meet the needs of the substation and transformer technicians. The course focuses on restraint systems where possible and fall arrest systems where necessary.	Statement of Attainment in RIIWHS204D Work Safely at Heights for "Transformer Access"	1 Day	1:10
Falling Objects	This program has been developed to give candidates the skills to implement control measures to ensure safety in the workplace from falling objects. This course has both a theoretical and practical component.	Statement of Attainment in RIIRIS201D Perform Local Risk Control for "Falling Objects"	4 Hours	1:20
Undertake Manual Handling	This unit covers lifting and moving materials manually, as well as the use of basic manual handling equipment in a wide range of environments.	Statement of Attainment in MEM11011B Undertake Manual Handling	2 Hours	1:15
Confined Space and Breathing Apparatus				
Enter & Work in Confined Spaces	This is aimed at those persons required to access confined spaces in the workplace.	Statement of Attainment in "MSAPMPER205C Enter Confined Space, MSAPMPER200C Work in Accordance with an Issued Permit, MSAPMOHS217A Gas test Atmospheres" or Statement of Attainment in "RIIWHS202D Enter and Work in Confined Spaces"	2 Days	1:10
Breathing Apparatus	This training has been designed to give candidates the necessary skills to use breathing apparatus to access confined spaces for work tasks and emergency rescue. Includes pre and post operational checks, donning and doffing and duration calculations.	Statement of Attainment in "MSAPMOHS216A Operate Breathing Apparatus"	1 Day	1:10
First Aid and CPR				
Provide Cardiopulmonary Resuscitation	To provide the necessary skills and knowledge to allow a person to perform Cardiopulmonary Resuscitation (CPR) in line with the Australian Resuscitation Council (ARC) Guidelines.	Statement of Attainment in "HLTAID001 Provide Cardiopulmonary Resuscitation"	3 Hours	1:12
Provide Basic Emergency Life Support	To provide the necessary skills and knowledge to enable a first aider to provide an initial response to an emergency in line with practised actions and Australian Resuscitation Council (ARC) Guidelines and/or state/territory regulations, legislation, policies and accepted industry guidelines.	Statement of Attainment in "HLTAID002 Provide Basic Emergency Life Support and HLTAI001 Provide Cardiopulmonary Resuscitation"	8 Hours	1:12
Provide First Aid	To provide the necessary skills and knowledge to enable first aid response for life support and management of casualty(ies), the incident and other first aiders, until the arrival of medical or other assistance.	Statement of Attainment in "HLTAID003 Provide First Aid and HLTAI001 Provide Cardiopulmonary Resuscitation"	2 Days face to face or 1 day face to face and 8 Hours at home study	1:10
Provide Advanced First Aid	This unit deals with the provision of advanced first aid response for life support and management of casualty(ies), the incident and other first aiders, until the arrival of medical or other assistance, and provision of support to other providers. This unit builds on HLTAI003 Apply First Aid to include additional skills and use of a range of equipment.	Statement of Attainment in "HLTAID006 Provide Advanced First Aid and HLTAI007 Provide Advanced Resuscitation"	3 Days face to face	1:10
Provide Advanced Resuscitation	This unit deals with the provision of advanced first aid resuscitation techniques, life support and management of casualty(ies), until the arrival of medical or other assistance, and provision of support to other providers.	Statement of Attainment in "HLTAID007 Provide Advanced Resuscitation"	4 Hours	1:10

RELY ON THE WORLD'S LEADING HEIGHT SAFETY COMPANY



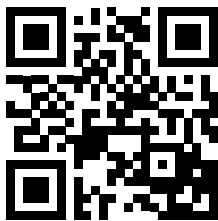
WE'VE GOT YOUR BACK

Capital Safety™ is a global company solely dedicated to fall protection and rescue. Our focus is razor sharp, it continually drives us to design and manufacture the safest possible height safety gear.

We understand the industries we serve and listen to the workers in the field. We employ the best engineers to create innovative solutions and patent the products that keep workers safe at heights around the world. Capital Safety has the best quality and largest range of fall protection products in the industry. But we're more than a product company.

We take an innovative approach in bringing our products to the field. We have created international partnerships and a vast network of authorised distributors, certified installers and service centres. We offer on-site and in-house training. Our manufacturing sites hold ISO 9001 quality accreditation, as well as ISO 14001 environment and AS4801 Health & Safety accreditation. Capital Safety is one of the world's leading manufacturers of fall protection and rescue equipment, with decades of experience and a legacy of innovation. Look for complete solutions in our extensive range of DBI-SALA® and Protecta® brands.

“DEDICATED TO BRINGING EVERY WORKER AT HEIGHT HOME SAFELY”



Contact us for more detailed information on our Training capabilities. Alternatively visit www.capitalsafety.com.au or scan the QR Code to be taken directly to the Training Overview page on our website.

Call: 1800 245 002 (AUS) 0800 212 505 (NZ)
www.capitalsafety.com.au



HEAD OFFICE AND MANUFACTURING
95 Derby Street Silverwater NSW 2128 Australia
Phone: +61 2 8753 7600 Fax: +61 2 8753 7603
Email: traininginfo@capitalsafety.com.au

©2015, Capital Safety (Australia)

Capital Safety is a
Registered Training Organisation
(Provider no. 91276)

